

Using the Epson Scanner (Document created March 14, 2002)

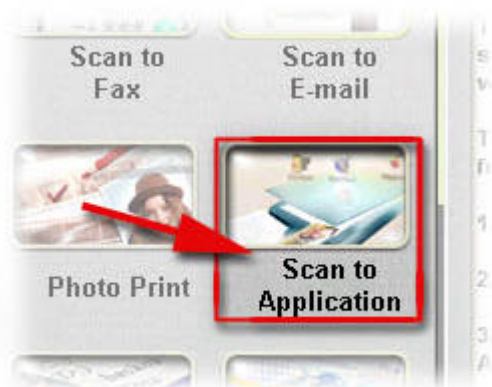
The Epson scanner is installed on PC10. You can scan images and send them to an application such as Photoshop to edit and save.

Please follow the steps below.

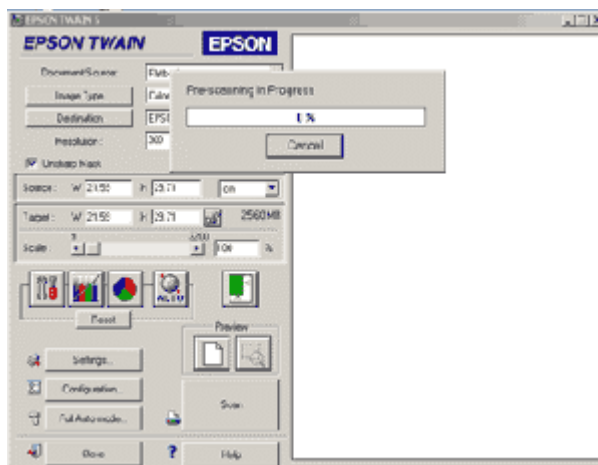
1. Place your image face down on the bed of the scanner towards the top right corner.
2. Open EPSON Smart Panel (icon on desktop).



3. Select Scan to Application.



4. Wait patiently for Epson Twain panel to appear.



- A preview scan will automatically occur.
Click and drag to select the exact area you wish to scan otherwise you will end up with the whole scanner bed in your image.



- If you wish to change any settings you can click Help for instructions.

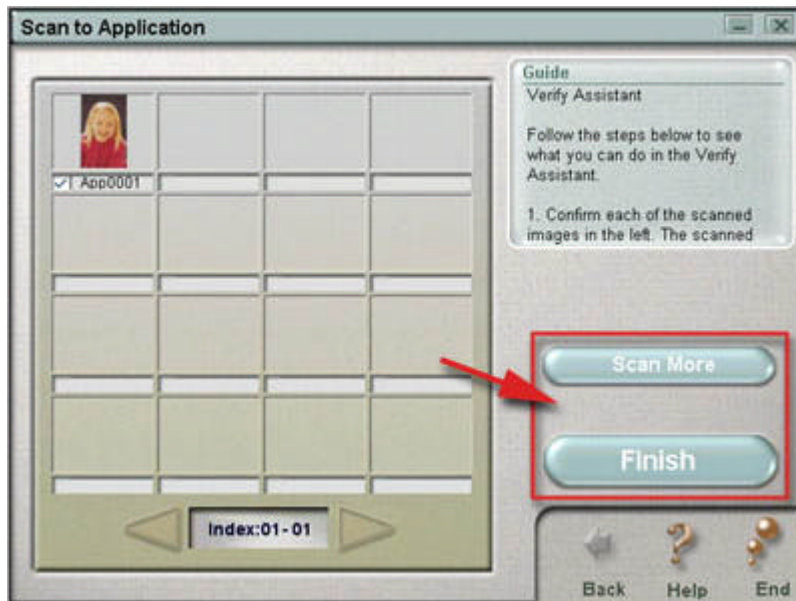
- When you are ready to scan click **Scan**.



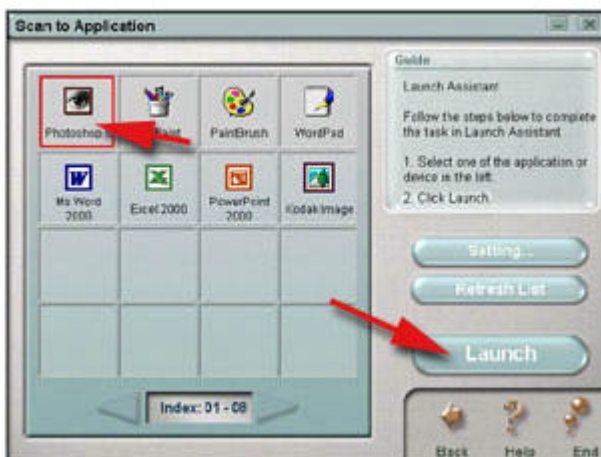
- When scanning is complete click **Close**.



9. The Verify Assistant panel will now open. Follow the instructions given to verify your scanned image(s) here. If you want to scan more images, click **Scan More**. Or, you can click **Finish** to go to the next step -- Launch.



10. You will see several applications listed in Launch Assistant. Select an application which you wish to view your scanned image/s in and then click **Launch**.



When you click the **Launch** button from Launch Assistant, the image(s) will be sent to the selected application.